

Parter

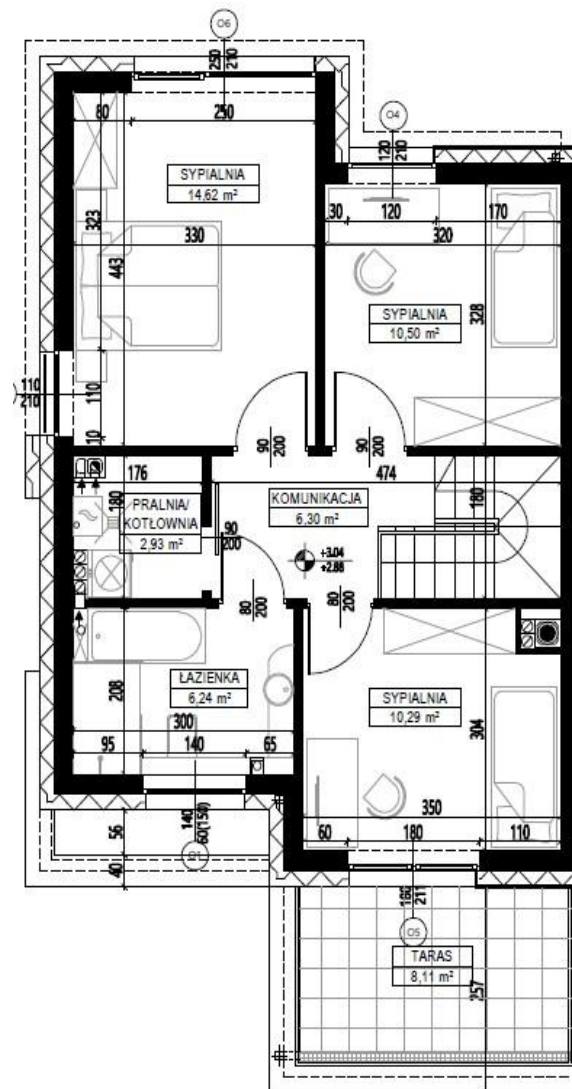
Salon / jadalnia - 32,19m²

Komunikacja - 5,20m²

Wiatrołap / garderoba - 4,53m²

WC - 1,51m²

Garaz - 18,80m²



Piętro

Sypialnia 1 - 14,62m²

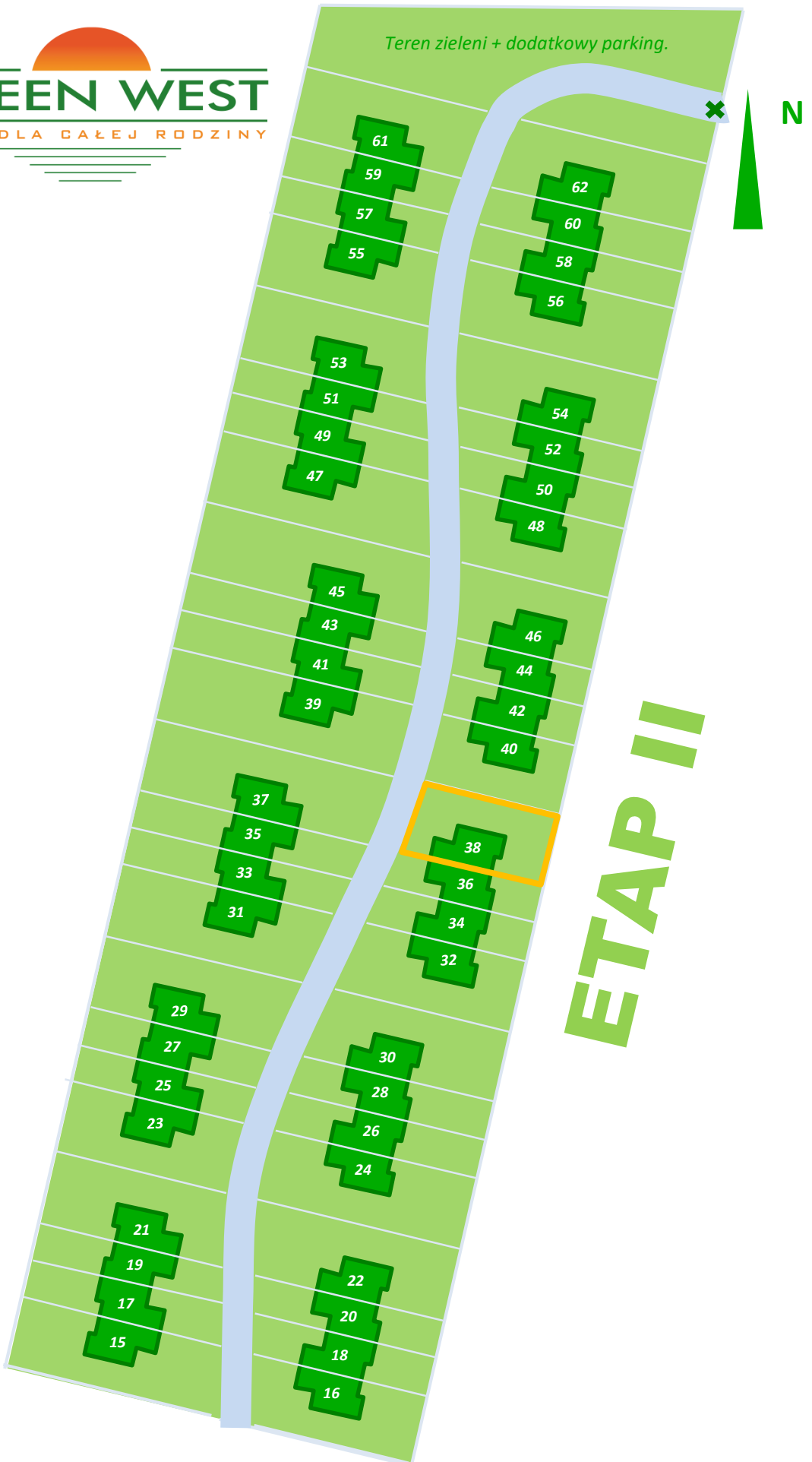
Sypialnia 2 - 10,50m²

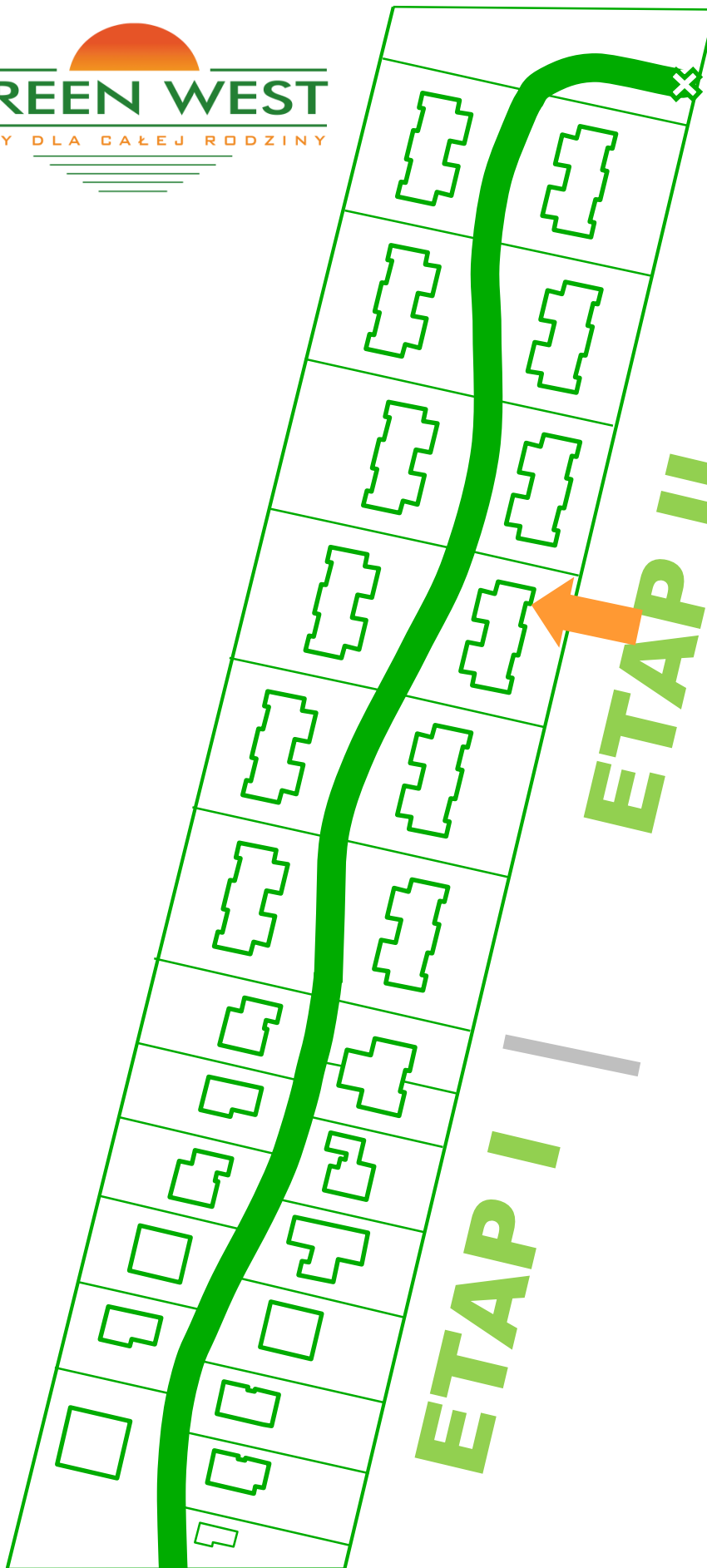
Sypialnia 3 - 10,29m²

Łazienka / WC - 6,24m²

Pralnia / kotłownia - 2,93m²

Komunikacja - 6,30m²





N

